



SEED BUZZ

The newsletter for WSCIA, which certifies small grains and pulse crops

IN REMEMBRANCE OF FORMER WSCIA MANAGER KEITH PFEIFER

Keith M Pfeifer, 82, passed away surrounded by his family March 20, 2024 in Yakima, Washington. He served in the 50th Air Police Squadron. Later, he attended Washington State University and earned a B.S. in Agronomy.

Keith was an avid fisherman, golfer, boater and he had a long career with Washington State Crop Improvement Association.

He is survived by his wife of 58 years Judy, daughters Wendy and Kristine, grandchild Jordan, and sisters Lorene and Judy.

Keith was recognized at the 2024 Association of Official Seed Certification Agencies (AOSCA) Annual Meeting for his long service and dedication to Washington Crop Improvement.



MANAGER CORNER

With a busy harvest season underway and fall planting right on the horizon, it is a great opportunity to reinforce the benefits of using certified seed. Certified seed plays such a crucial role in agricultural productivity and quality and not just in Washington State.

The Association of Official Seed Certifying Agencies (AOSCA) is the long-standing global organization that supports all certification agencies to aid in collaboration, establish and review standards, and ensuring agriculture continues to advance with high-quality seeds. Please see the AOSCA flyer.

WHY IS CERTIFIED SEED IMPORTANT?

High-Quality and Purity: Certified seeds are thoroughly tested and meet strict standards for purity, ensuring they are free from contaminants like weed seeds, other crop seeds, and excessive inert matter.

(continued on next page)



WSCIA CONTACT INFO

 (509) 334-0461

Aaron Jeschke

WSCIA Manager
aaron@washingtoncrop.com

Rebecca Hulsey-Griffith

Certification Office Specialist
rebecca@washingtoncrop.com

Katie Whetzel

Finance Officer
katie@washingtoncrop.com

FOUNDATION SEED SERVICE

 (509) 592-4515

Cheyan James

FSS Assistant Manager
cheyan@washingtoncrop.com

Darryl Krause

FSS Operations Supervisor
darryl@washingtoncrop.com

Andrew Horton

Seed & Warehouse Technician

Genetic Integrity: Certification guarantees that the seeds are true to the variety claimed, preserving the genetic traits that farmers need, such as herbicide tolerance traits (COAX/Clearfield), resistance to diseases, pests, and environmental stresses.

Improved Germination Rates: Certified seeds typically have higher germination rates compared to non-certified seeds. This leads to better crop establishment and higher yields.

Better Yield Potential: Due to rigorous selection and breeding processes, certified seeds often possess superior traits that contribute to higher yield potential and overall crop performance.

Compliance with Regulations: Using certified seeds ensures compliance with agricultural regulations and standards, which can be important for accessing certain markets or qualifying for subsidies and support programs.

Economic Benefits: Although certified seeds may be more expensive initially, the benefits of higher yields, cleaner fields, better crop quality, and reduced losses often outweigh the costs, resulting in better economic returns for farmers.

Environmental Benefits: By reducing the need for chemical inputs and improving crop resilience, certified seeds contribute to more environmentally sustainable farming practices.

Overall, using Certified seed supports better agricultural outcomes, economic viability for farmers, and sustainable farming practices. The staff at WSCIA sincerely appreciates and commends all the growers and seed companies who are committed to producing and using Certified seed. Unfortunately, the costs to produce Certified seed continue to rise, much like your cost of doing business. Consequently, we were forced to announce in Fall of 2023 that WSCIA would be looking at increasing field inspection fees which have remained unchanged for more than a decade. Please see the CR101 notice included for an overview of the proposed changes.

- Aaron Jeschke, WSCIA Manager

THE FALL 2024 SPRING 2025 SEED SOURCE

IS AVAILABLE AT WASHINGTONCROP.COM UNDER: BUY CERTIFIED SEED

DISEASE RATINGS MAY CHANGE AS MORE DATA IS GENERATED

The variety VI Voodoo CL+ has been listed as “Resistant” in disease reports due to minimal stripe rust infection observed over three years in Corvallis and one year in Pendleton. However, subsequent observations show that VI Voodoo CL+ can be affected by substantial stripe rust pressure, depending on the stripe rust races that are present. As a result, Dr. Ryan Graebner with Oregon State University highlighted a change in its stripe rust score from “Resistant” to “Intermediate” in OSU’s disease report.



WSDA UPDATE

On August 16th, WSDA is collaborating with AOSA/SCST to host a testing location for viability accreditation. This is an all day testing overseen by a proctor and is both a written and practical exam.

This Fall there will be multiple new positions and vacancies to fill for these areas: administration office, field, lab and new regulatory seed positions. Please watch the WSDA newsletter for more information.

SEED ANALYSIS FOR FINAL CERTIFICATION & TESTS REQUIRED FOR CERTIFICATION

For certification to be issued by WSCIA, seed harvested from a field that has passed inspection and been conditioned at an approved conditioner must be sampled, and that sample submitted to the WSDA Seed Program. WAC 16-302-090 states that "The entire lot of seed must be cleaned, the quantity defined, and in condition for sale at the time of sampling." The defined quantity when submitting the sample must be cleaned weight of seed, not pre-cleaned.

Germination Test- A viability test where seeds are planted in optimum germination conditions and percentage of estimated germination is reported.

Purity- Determines the percentage of pure seed, inert matter, other crop seed, and weed seed in the sample submitted for analysis.

Identification is made of other crop and weed seed found in the sample, and reported at its rate of occurrence in seeds per pound.

Crop exam- detects the presence of various crop seeds in a sample and determines the estimated rate of occurrence in the seed lot.

Herbicide bioassay- The herbicide trait bioassay test subjects the seed to the herbicide to determine the percent of the seed that has the resistant gene present. Clearfield wheat bioassay for varieties with CL or CL+ traits, and Axigen trait test for varieties with AX traits are both offered by WSDA Seed Program, and required for certification trait-containing varieties.

VARIETY HIGHLIGHT

AGRIPRO *Greg McCormack greg.mccormack@syngenta.com*

AP Renegade is a consistently high performing hard red spring wheat. With a strong disease package, medium height and medium maturity, AP Renegade is widely adapted across production areas. AP Renegade has a high test weight with good protein and end use quality. It is hessian fly resistant.

AP Venom A hard spring, is extremely high yielding irrigated variety with good protein. It has medium maturity and medium to tall height with excellent straw strength. AP Venom is flexible for spring or fall planting.

AP Olympia- High Performance for High Moisture. AP Olympia combines the yield potential and straw strength to be a top variety in higher yielding areas or under Irrigation. In the higher moisture/Irrigated environment, in multiyear AgriPro testing it has been 5% higher yielding than SY Raptor and 7% higher yielding than SY Assure. AP Olympia is medium maturity, with good Barley Yellow Dwarf tolerance, though it is susceptible to Soil Borne Mosaic Virus. It is considered very tolerant to stripe rust. AgriPro Associates will have Certified seed available, for planting in the fall of 2024.

To find out more about AP Olympia, including yield data and a list of AgriPro Associates, go to AgriProwheat.com

WASHINGTON STATE UNIVERSITY

Marci Miller, Washington Genetics (509) 659-4020, marci@washgenetics.com

Nova AX is a semi-dwarf, soft white winter wheat with tolerance to the Aggressor herbicide and approved for use in the CoAXium production system. The line has very good adaptability to different production regions across the state and maintains high yield across testing locations. Nova AX has good emergence from deep planting, intermediate snow mold tolerance, and has moderate HTAP resistance to stripe rust. It also has very high end-use quality attributes, with average test weight.

Rydrych MZ is a semi-dwarf, soft white winter wheat with high levels of tolerance to the herbicide Metribuzin. Following label instructions, Rydrych MZ has been tested at the high label rate and has seen minimal injury and yield loss under these spray conditions. Rydrych MZ is average for plant height and heading date, has good test weight, very good end-use quality, and good grain yield. This line has strong resistance to stripe rust and is also eyespot foot rot resistant. Rydrych MZ is best adapted to the intermediate and high rainfall zones of the state of Washington.

LIMAGRAIN CEREAL SEEDS *Bailey Jenks, (509) 520-5661, Bailey.jenks@limagrain.com*

LCS Shine continues to be a soft white winter bin buster across the PNW. LCS Shine is awnless, early-medium maturity with great test weight, good stripe rust resistance and excellent c-stripe resistance.

LCS Jefe is an awned soft white winter wheat boasting broad adaptability with an intermediate maturity and height, good test weight, low protein, desirable end-use quality, and great stripe rust resistance.

LCS Kamiak is an awned early maturing soft white winter wheat with excellent yield potential in intermediate rainfall zones. LCS Kamiak will bring winter hardiness, stiff straw, and excellent stripe rust resistance to your fields.

LCS Blackbird is an awned hard red winter wheat intended for high production acres. With a short height, stiff straw, and medium maturity—LCS Blackbird also has great resistance to stripe rust and Soil Borne Wheat Mosaic Virus.

VI Encore CL+ is a new awned soft white winter Clearfield variety from the Varsity Idaho joint breeding program between LCS and University of Idaho. VI Encore CL+ has a medium-late maturity with a medium height and excellent stripe rust resistance.

LCS Scorpion AX is an awned soft white winter CoAXium variety that has shown broad adaptability across the PNW. LCS Scorpion AX has medium maturity and medium height, excellent yield potential and top-notch stripe rust resistance.

LCS Reaper AX is an awned soft white winter CoAXium variety intended for intermediate rainfall zones with exceptional yield potential and early maturity.

LCS Kraken AX is an awned soft white winter CoAxiom variety with broad adaptation and decent winter hardiness. LCS Kraken AX has medium maturity, good stripe rust resistance, and solid test weight.

LCS Hydra AX is an awned soft white winter CoAxiom variety intended for low rainfall zones across the PNW region. LCS Hydra AX has good stripe rust resistance, medium-early maturity, and solid test weight.

LCS Eclipse AX is an awned hard red winter CoAxiom variety with excellent yield potential in intermediate rainfall zones. LCS Eclipse AX has an intermediate maturity, intermediate height, and decent stripe rust resistance.

WESTBRED/BAYER *Nathan Clemens, (509) 570-8696, nathan.clemens@bayer.com*

NEW WB1621, a new awnless soft white winter wheat that offers extremely high yield potential in both dryland and irrigated acres across the PNW. WB1621 is a medium – late maturing variety with strong winterhardiness and solid test weight. It's medium – tall in height, has moderate resistance to Stripe Rust and offers good mill/bake quality.

NEW WB1922, new soft white winter wheat that is late in maturity, tall in height with excellent standability and has high yield potential across all PNW dryland cropping zones. WB1922 offers Stripe Rust resistance, excellent winter hardiness, strong test weight and good mill/bake quality. Also offers moderate resistance to Cephalosporium Stripe.

OREGON STATE UNIVERSITY *Margaret Krause, margaret.krause@oregonstate.edu*

Nimbus (OR2130755) is an awned common soft white winter wheat developed by Oregon State University that is intended for production in the low to intermediate rainfall production zones in eastern Oregon and eastern Washington. Nimbus is stripe rust resistant and moderately resistant to strawbreaker foot rot. Nimbus carries one gene for Imazamox resistance making it tolerant to Beyond soil residues. Nimbus has an early heading date, similar to Norwest Tandem, and is a tall semi-dwarf, similar to Nixon but shorter than Norwest Duet. Nimbus has good yield potential and has a 'Most Desirable' (MD) rating for end-use quality. The pedigree of Nimbus is Carstens V/Skiles//ORCF-102.

Mallory CL+ (OR2190025 CL+) is an awned common soft white winter wheat developed by Oregon State University that has shown high yield potential under growing conditions in the low to intermediate rainfall production areas of Oregon and eastern Washington. Mallory CL+ carries two genes for Imazamox resistance and is intended for use with the Beyond herbicide in wheat producing areas that have issues with jointed goatgrass and downy brome. Mallory CL+ has an earlier heading date than other CL+ varieties currently available and is intermediate in height, similar to Appleby CL+ and slightly taller than UI Magic CL+ depending on growing conditions. Mallory CL+ shows moderate resistance to stripe rust and carries one gene conferring moderate resistance to strawbreaker foot rot. The end-use quality of Mallory CL+ was rated as "Desirable" (D). The pedigree of Mallory CL+ is Rosalyn/3/ORCF-103/AP100CL//OR2060371.

Gale (OR2180377) is an awn-tipped common soft white winter wheat developed by Oregon State University and targeted for the Willamette Valley as an improvement upon Rosalyn, based on its high yield potential in the region. Gale has strong stripe rust resistance and moderate resistance to Septoria, and it carries two genes conferring moderate resistance to strawbreaker foot rot. Gale has an intermediate heading date similar to LCS Shine and is similar in height to Rosalyn. The variety is similar in overall quality to Nixon and Nimbus and remains on track to be rated "Most Desirable" (MD) by the Pacific Northwest Wheat Quality Council. The pedigree of Gale is Rosalyn//Einstein/Rosalyn.

BARLEY PROJECT, OREGON STATE UNIVERSITY

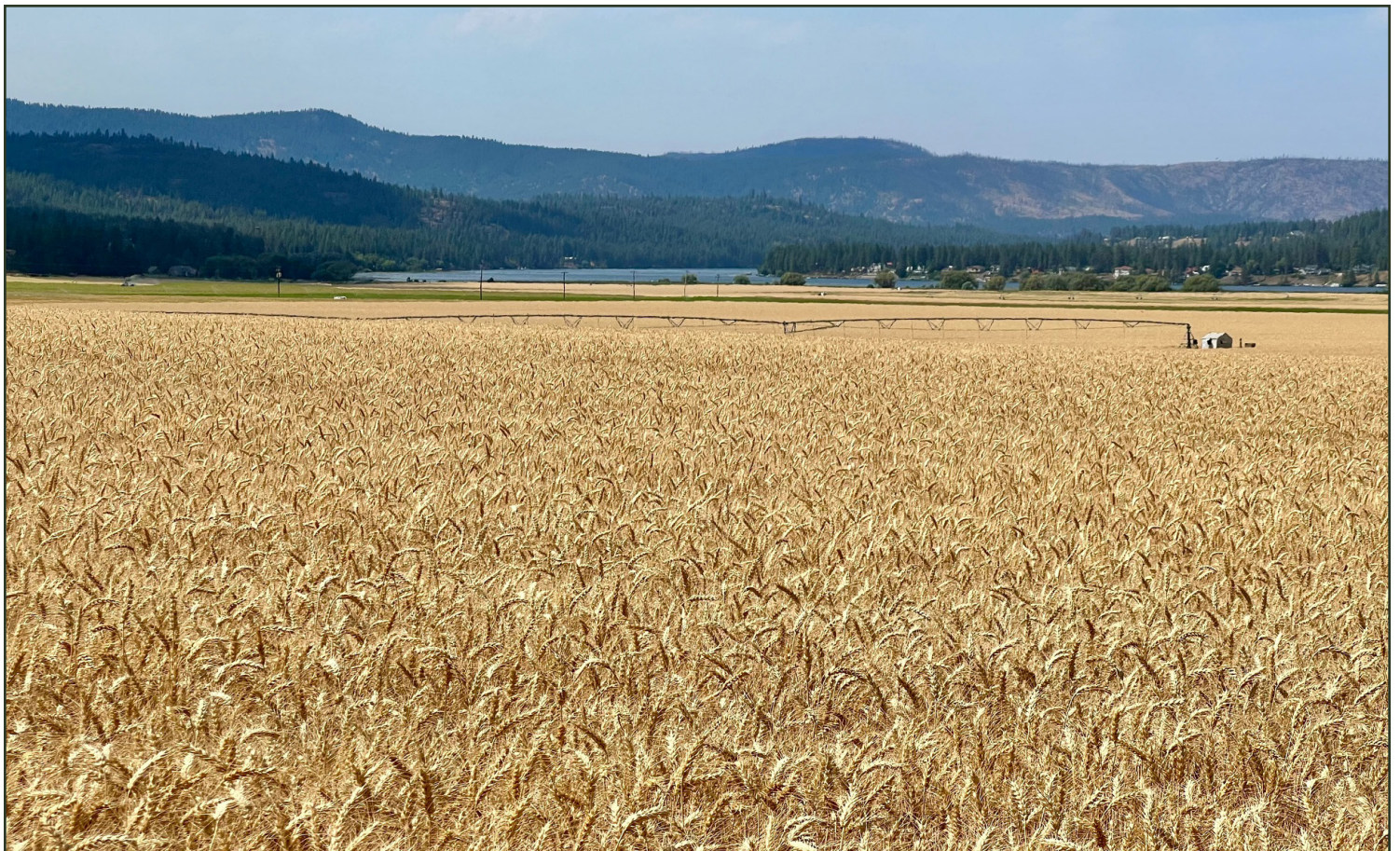
Denis Sather, (541) 737-8806, denis.d.sather@oregonstate.edu,

Margaret Krause, margaret.krause@oregonstate.edu

Successor (DH190481) is a two-row spring feed barley variety developed by Oregon State University that is notable for its tolerance to Imazamox herbicide residues and can be planted in rotation with crops treated with these chemicals. Adapted to dryland production regions in the Pacific Northwest, Successor has shown moderate yields, high test weight, and minimal susceptibility to scald and barley stripe rust. Successor has an earlier heading date and is slightly shorter in comparison with Survivor. The pedigree of Successor is Lightning/Survivor.

Top Shelf (DH162310) is a two-row winter malting barley released by Oregon State University that is a non-producer of glycosidic nitrile (GN). GN is the precursor to a regulated compound in distilled spirits, and therefore the non-producing trait (GN0) is an important trait for the use of malting barley in distillation. Top Shelf is the first GN0 winter malting barley variety released in North America. In addition to showing resistance to scald, Top Shelf has shown high yields, plump grains, and test weights in its target environment of southern Idaho. Top Shelf has high extract, enzymatic activity, and free amino nitrogen and meets the guidelines for malt and all-malt and/or grain distillation. The pedigree of Top Shelf is DH130939/LCS Calypso.

GN0-Vivar (DH170472) is the second glycosidic nitrile-null (GN0) winter two-row malting barley variety released by Oregon State University. GN0-Vivar was derived from the same cross as Top Shelf (DH130939/LCS Calypso) but shows distinct differences in terms of malting profile and end-use quality. GN0-Vivar has shown high yields, test weights, and plump grains in its target production region of southern Idaho. The variety has also shown low susceptibility to scald and strong resistance to bacterial leaf streak. GN0-Vivar is best-suited for all-malt distilling but can be suitable for grain distillation at higher protein levels.



FALL 2024 SEED AVAILABILITY LIST AND ORDER FORM
DUE BY SEPT. 1, 2024: APPLICATIONS FOR FALL 2025 YEAR-IN-ADVANCE REQUESTS (REQUIRES YIA CONTRACT)

Invoices will be sent when seed is ready for pickup.
If seed is not picked up within 14 days of being ready, WSCIA reserves the right to charge storage fees of \$10 pallet/day.

Table with 4 main sections: DELIVERY IN FALL (WINTER WHEAT), DELIVERY IN FALL (WINTER BARLEY), PEA/LENTIL, and NEW WINTER WHEAT VARIETIES. Each section includes columns for variety, price, 2024/2025 POUNDS, and PKG TYPE.

Please indicate Package Type Code: 50/60# Paper = "P" or 2000# Poly Bulk Bag = "B"

- * License Required for Purchase (WSCIA), price includes royalty
- ** Includes License (PVP)
- *** License Required for Purchase (WSU)
- **** License Required for Purchase (OSU)

Older Varietys Available- Contact Washington Crop Improvement for Information

Seed Treatment (Small Grain and Legume) Please Check Box of Preferred Treatment
Small Grains:

Table with 2 columns: Seed Treatment (Small Grains) and checkbox. Rows include CMVT APX HI-RHIZE CB ZEUS, \$10.44 cwt CMVT CB .66, \$11.68 cwt CMVT CB 1.0, \$12.81 cwt CMVT CB 1.33, and \$12.38 Terraxxa Custom Blend + Gaucho.

Legumes:

Table with 2 columns: Legumes and checkbox. Rows include LSV Vibrance P/B APX CB ZEUS, \$10.27 cwt LSV APX CB .75 Peas & Lentils, and \$11.19 cwt LSV APX CB 1.0 Chickpeas.

Purchaser to review-agree to the terms on the reverse by signing and dating the Purchase Order

Form fields for: Company/Farm Name, Contact Person, Billing Address, City/State/Zip, Phone and E-mail

MAIL, PHONE, E-MAIL OR YOUR SIGNED ORDER TO:

Washington State Crop Improvement
2575 NE Hopkins Ct., Pullman, WA 99163
Seedhouse Phone: 509-592-4515
E-mail: cheyan@washingtoncrop.com

PURCHASE ORDER – TERMS AND CONDITIONS OF SALE

Mail or fax to: Washington State Crop Improvement Association (WSCIA) Foundation Seed Service
2575 NE Hopkins Ct., Pullman WA, 99163 • Fax: (509) 335-7007

Please Note: If you place an order by phone or e-mail, WSCIA will still need a *signed copy* of this form showing that you agree to the terms and conditions as stated below. If the signed copy is not received by WSCIA within 14 days of your order, WSCIA may terminate your order without notice.

- 1) This Purchase Order can only be changed or canceled if the purchaser notifies WSCIA within 7 days after this order is placed.
- 2) For orders totaling less than \$1,000, payment is required before seed can be picked up or shipped. For orders greater than \$1,000, payment for seed is due within 30 days of invoice date. An 18% finance charge will be applied to all invoices not paid within 30 days of invoice date, with minimum finance charge of \$5.00.
- 3) Handling fees of \$50 per order of up to 3 varieties + \$10 per each additional variety will be applied to all seed shipped in amounts of 200 pounds or less.
- 4) **Due to the cost and risk involved in producing seed, WSCIA requires at its discretion and purchaser hereby agrees, that any purchaser ordering seed in advance ("Year-in-Advance" order) must deposit 20% if required by WSCIA-FSS of the posted Foundation seed price with the seed order. The purchaser must also take delivery of, and pay for, 100% of seed ordered.**
- 5) WSCIA cannot, and does not guarantee the availability of any seed order. Therefore, if seed of a marketable quality is not available upon order, WSCIA in its sole discretion will choose whether to allow the purchaser to change, cancel or reconfirm the seed order beyond the change deadlines listed in Paragraph 1 above. Said changes will only be allowed if placed in writing and signed by WSCIA and the purchaser.
- 6) No seed orders will be returned or resold without prior written approval of WSCIA which WSCIA may withhold for any reason.
- 7) All Foundation class seed of allocated varieties must be used as Foundation seed only, and will not be reclassified to Registered or Certified seed without written approval of WSCIA.
- 8) Seed is priced F.O.B. the storage location. All freight arrangements and/or charges are the sole responsibility of the purchaser. If someone other than the purchaser is to pick up the seed order, WSCIA must be notified in advance, in writing, of the name of the person or persons picking up the order.
- 9) Once the seed order has been loaded for the purchaser, WSCIA is released from any and all responsibility for the seed.
- 10) All special orders, such as orders of any variety of seed not listed on WSCIA's advance order form, will have additional charges including, but not limited to, freight charges, in addition to the established price set by the WSCIA Board of Directors.
- 11) If a seed shortage exists relative to a particular variety, the seed will be allocated among those ordering it according to WSCIA's Allocation Policy (11/18/02) which is incorporated herein by this reference. A copy can be obtained by contacting WSCIA.
- 12) **Limited Warranty:** WSCIA warrants, *to the extent of the purchase price only*, that the seeds WSCIA sells will be labeled as required by law and will conform to the label description within the recognized tolerances in the seed industry and its standards. **WSCIA DISCLAIMS ALL OTHER WARRANTIES, EXPRESSED OR IMPLIED, INCLUDING, BUT NOT LIMITED TO, THE IMPLIED WARRANTIES OF MERCHANTABILITY AND FITNESS FOR A PARTICULAR PURPOSE/USE.**
- 13) **WSCIA HAS MADE EFFORTS TO MINIMIZE THE POSSIBILITY OF OUT CROSSING, HOWEVER, WSCIA SELLS ALL SEEDS IN AS-IS CONDITION/FORM AND IS NOT RESPONSIBLE FOR ANY OUT-CROSSING WHICH HAS OCCURRED, MAY OCCUR, OR WILL OCCUR IN ANY FOUNDATION SEED PRODUCTION FIELD. THE PURCHASER OF THE SEED AGREES TO ASSUME THE RESPONSIBILITY OF REMOVING ANY VISUALLY OFF-TYPE SEED(S) WHICH MAY HAVE RESULTED FROM A CROSS-POLLINATION EVENT TO THE EXTENT THAT CERTIFICATION STANDARDS ARE MET.**
- 14) **LIMITATION OF LIABILITY: THE PURCHASER'S SOLE AND EXCLUSIVE REMEDIES FOR ANY AND ALL DAMAGES SUSTAINED AND/OR LOSSES SUFFERED WITH RESPECT TO THE PURCHASE AND/OR USE OF THE SEED ORDERED FROM WSCIA, WHETHER BY WSCIA'S BREACH OF WARRANTY, NEGLIGENCE, OR ANY BREACH OF ANY OTHER DUTY, IS LIMITED TO THE FOREGOING WARRANTY AND SHALL BE, AT WSCIA'S SOLE OPTION, LIMITED TO THE RECOVERY OF AN AMOUNT NOT TO EXCEED THE ORIGINAL PURCHASE PRICE OF THE SEED.**
- 15) **LIQUIDATED DAMAGES:** The parties agree that should Purchaser fail to pay for and accept the seed per the terms of this agreement, that WSCIA's damages are difficult to ascertain in advance. The difficulty of ascertaining damages is partly due to the uncertainty of whether and to what extent WSCIA can mitigate its damages. Therefore, the parties agree that establishing liquidated damages remedy will lead to greater certainty of the parties' rights. The agreed liquidated damages is 80% of the original sales price or a lesser amount in WSCIA's determination.
- 16) This agreement shall be governed by the laws of the State of Washington and venue for any action shall lie in Superior Court for Whitman County, Washington. This agreement may be subject to mediation according to Chapter 49 of Title 15 of the Revised Code of Washington. In any action to enforce this agreement, the prevailing party shall be entitled to its reasonable attorney fees and costs.

Purchaser's Signature

date

WSCIA

date

Purchaser's Name

WSCIA Name



77th Annual Conference

Early Bird Registration Is Now Open!

November 11-12, 2024
Yakima Convention Center

Scan the QR code below or
[CLICK HERE](#) to register today

Hear the latest updates
from Breeding Teams &
Industry Experts.
WA, ID, OR & CCA Pesticide
Credits will be available!



Join us in Yakima, WA, November 11-12, 2024 at our 77th Annual Conference! Registration is open at the early bird pricing so register soon to take advantage of the savings. Sponsorships are available! Contact Jenn@washingtoncrop.com to find out how to partner with us.



Certified Success

Dedicated to elevating seed quality,
fostering innovation, and driving
agricultural progress.

The Association of Official Seed
Certifying Agencies (AOSCA) stands as a
beacon of excellence in seed certification.
Established in 1919 as the International
Crop Improvement Association, AOSCA
has been steadfast in its mission to set
and uphold credible standards for the
production of top-tier seeds.

Join AOSCA today and become part of a
legacy dedicated to elevating seed
quality, fostering innovation, and driving
agricultural progress.



RICH HERITAGE, MODERN VISION

With a legacy dating back to 1919, AOSCA has been at the forefront of seed certification, evolving with time while retaining its commitment to excellence. Rich Heritage, Modern Vision: With a legacy dating back to 1919, AOSCA has been at the forefront of seed certification, evolving with time while retaining its commitment to excellence.

GLOBAL REACH

AOSCA's influence extends far beyond 45+ agencies within U.S. borders, with member agencies spanning seven countries: Canada, Chile, Argentina, Brazil, Australia, New Zealand, and South Africa. This international presence underscores AOSCA's role as a global leader in seed quality assurance.

CREDIBLE STANDARDS

AOSCA's stringent certification standards are the bedrock of its reputation. By adhering to these standards, seed producers demonstrate their commitment to quality and integrity, instilling confidence in consumers and stakeholders alike.

COLLABORATIVE PLATFORM

AOSCA provides a collaborative platform for member agencies to share knowledge, best practices, and innovations in seed certification. This collective effort fosters continuous improvement and ensures that AOSCA remains at the forefront of industry advancements.

ADVANCING AGRICULTURE

By ensuring the availability of high-quality seeds, AOSCA plays a vital role in advancing agriculture worldwide. From enhancing crop yields to promoting sustainability, AOSCA's efforts have a tangible impact on the global food supply chain.

For inquiries and membership details, visit www.aosca.org or contact us at office@aosca.org.





PREPROPOSAL STATEMENT OF INQUIRY

CR-101 (October 2017)
(Implements RCW 34.05.310)
Do **NOT** use for expedited rule making

CODE REVISER USE ONLY

OFFICE OF THE CODE REVISER
STATE OF WASHINGTON
FILED

DATE: October 17, 2023

TIME: 3:27 PM

WSR 23-21-090

Agency: Dept. of Agriculture

Subject of possible rule making: Chapter 16-303 WAC, Seed Assessment, Fees for Seed Services and Seed Certification. In response to a petition for rule making submitted by the Washington State Crop Improvement Association (WSCIA), the department is considering amending WAC 16-303-340 by increasing fees to align with the current cost of providing certification services, add quinoa as a crop that is certified under this section and to otherwise align with the department's seed certification rules and fees.

The department may also consider revising the language to increase clarity and readability and to conform with current industry practices and needs.

Statutes authorizing the agency to adopt rules on this subject: RCW 15.49.005, .310, and .370

Reasons why rules on this subject may be needed and what they might accomplish: The department designated WSCIA as the director's duly authorized agent for the purpose of certifying seed of buckwheat, chickpeas, field peas, lentils, millet, soybeans, small grain, and sorghum in WAC 16-302-010. WSCIA funds the cost for certifying these seed crops through the collection of fees in WAC 16-303-340. Overhead costs for providing these services have risen dramatically over the last several years, however the fees in this section have not been revised since 2012. After a thorough budget review, the WSCIA Board of Directors have determined that they cannot continue to provide certifying services at the current fee rate and must revise the fees in this section to more accurately recover the cost for these services.

Identify other federal and state agencies that regulate this subject and the process coordinating the rule with these agencies: None

Process for developing new rule (check all that apply):

- ☐ Negotiated rule making
- ☐ Pilot rule making
- ☐ Agency study

☒ Other (describe) Affected stakeholders will be notified of proposed amendments. Affected stakeholders will also have an opportunity to submit written comments on the proposed rules during the public comment period and will be able to present oral testimony at the public hearing.

Interested parties can participate in the decision to adopt the new rule and formulation of the proposed rule before publication by contacting:

Name: Elisha Chambers, Division Rules Coordinator
Address: 1111 Washington St SE, Olympia WA 98504
Phone: (360) 974-9769
Fax: (360) 902-2085
TTY: : (800) 833-6388
Email: elisha.chambers@agr.wa.gov
Web site: <https://agr.wa.gov/LawsRules/Rulemaking>

Other:

Additional comments:

(If necessary)

Name: Paula Moore, Seed Program Manager
Address: 21 North 1st Ave, Suite 203, Yakima, WA 98902
Phone: (509) 314-1032
Fax: (509) 454-4395
TTY: (800) 833-6388
Email: pmoore@agr.wa.gov
Web site: <https://agr.wa.gov/services/inspections-and-investigations/inspections/seed/contacts>

Other:

Date: 10/17/23

Name: Jessica Allenton

Title: Assistant Director

Signature:

WASHINGTON STATE CROP IMPROVEMENT ASSOCIATION

Washington State Crop Improvement Association, INC., (WSCIA) is a non-profit organization working with Washington State University, Washington State Department of Agriculture and Washington seed growers and conditioners to develop, produce and distribute certified seed in order to improve crop yields in Washington.

Working through education, instruction and promotion, WSCIA is the official Washington State agency for foundation seed and for seed certification of Buckwheat, Chickpea, Field Pea, Lentil, Sorghum, Small Grain and Forest Reproductive Material. Certification of seed of Grass, Dry Edible Bean and Soybean is conducted by the Washington State Department of Agriculture.



QUALITY ~ INTEGRITY ~ DEDICATION