



# Seed Buzz

JANUARY 2018

## Inside This Issue

- ◆ Introduction to WSCIA Board
- ◆ Electronic Bulk Seed Certificate Information
- ◆ WAC Revisions
- ◆ Certification Update
- ◆ Foundation Seed Order Form

### Certification Services

2575 NE Hopkins Court  
 Pullman, WA 99163  
 Phone: 509-334-0461  
 Fax: 509-334-6809  
 Email:  
[jerry@washingtoncrop.com](mailto:jerry@washingtoncrop.com)  
[karen@washingtoncrop.com](mailto:karen@washingtoncrop.com)  
[lauren@washingtoncrop.com](mailto:lauren@washingtoncrop.com)  
[cherijo@washingtoncrop.com](mailto:cherijo@washingtoncrop.com)



### Foundation Seed Service

Grimes Way,  
 WSU Ag Seed House  
 Pullman, WA 99164-6420  
 Phone: 509-335-4365  
 Fax 509-335-7007  
 Email:  
[darryl@washingtoncrop.com](mailto:darryl@washingtoncrop.com)  
[darlene@washingtoncrop.com](mailto:darlene@washingtoncrop.com)



## NOTE FROM THE MANAGER: Jerry Robinson

With the beginning of a new year a great number of items come to your attention regardless if you are a grower, seed dealer, commercial grain handler, or in our case a certification agency. How are the crops fairing so far this winter? What is best to plant this spring: cereals or pulse crops? What kind of market will 2018 bring? And so it goes with many unanswered questions.

With the decline in wheat prices and the meteoric rise in garbanzo prices everyone seems to be wanting to jump on the garbanzo wagon and grow these new rock stars. Garbanzo beans, or Chickpeas, have been around for a number of years and have enjoyed a fair amount of support within the farming community, but nothing like the past several years. With this new found fame also come some potential



*"Bulls-eye" lesions on chickpea pods, caused by Ascochyta Blight*

new found problems. Some of these problems you may have already faced and some you may not be aware of yet. The first and most important part of producing a good quality chickpea crop is high quality seed. If possible purchase certified seed which has been field inspected for off types and ascochyta blight during the growing season and lab tested by the WSDA Seed Lab for purity and germination. If you cannot purchase certified seed please purchase from a reputable dealer refraining from using "bin run" seed which may contain off types, ascochyta, and poor germ. Many times the small kabuli beans are used for seed which can lead to the same type of issues as simple bin run.

This small seed size can actually be a different variety (desi type) and have a negative impact upon the germination due to hard seed



*Lesions caused by Ascochyta Blight on chickpea stem, pod and leaves.*

*(continued on next page)*

and poor seed quality. These small beans are also more likely to have ascochyta blight if the parent plant was infected, since the disease stunts plants and stops the growth of the seed. So with these potential problems the quality of your chickpea seed is one of the most important considerations to be made when making your planting plans.

The type of seed treatment used for chickpeas has become an issue over the past several years as Metalaxyl-resistant *Pythium* has become more prevalent and is thinning or destroying plant stands in many chickpea fields. This past year several companies including WSCIA had severe thinning of fields to the point of having to re-seed some fields. The issue of Metalaxyl-resistant *Pythium* is found where heavy use of Metalaxyl fungicide has been or is being used such as in potatoes. This does not mean that only irrigated or potato ground has this issue, damping off caused by this resistance has been found here on the Palouse under dryland conditions also. With the high cost and shortage of seed stocks reseeding is not a cost effective proposition for anyone – grower or seed dealer – making it important to

choose an effective seed treatment from the start, so this year WSCIA will be using Intego from Albaugh LLC for all foundation chickpea seed. Following Dr. Weidong Chen's Metalaxyl resistant *Pythium* research Intego is currently the most effective seed treatment for this problem. Dr. Chen is continuing his research and it looks that there may be some additional chemistry on the horizon that will help us combat this problem in the near future.

As we move into 2018 everyone here at Washington State Crop Improvement wishes you a happy and prosperous New Year. Please do not hesitate to contact our office if you have questions or need assistance with your foundation seed or certification needs.

**This picture to the right shows 6 varieties of chickpeas –**

**5 Kabuli type and 1 Desi type, can you pick them out? Some are easily distinguishable, while others are not. This is a good example of why good seed is imperative in producing a good saleable crop.**

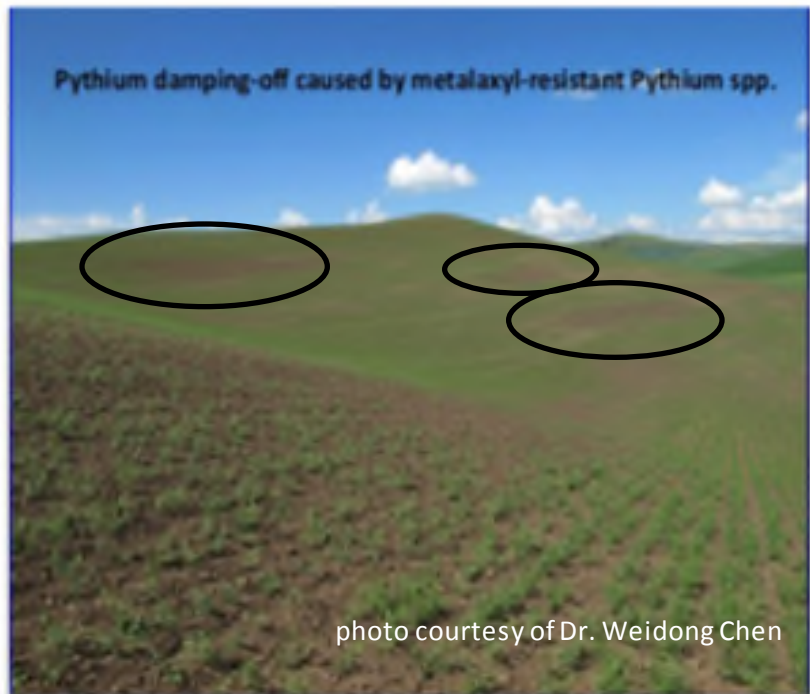


photo courtesy of Dr. Weidong Chen

**THANK YOU TO OUR SPONSORS & EXHIBITORS WHO HELPED  
SUPPORT OUR 2017 CONVENTION**

**PREMIER CONVENTION SPONSORS**



Science For A Better Life



Limagrain



**PLATINUM CO-SPONSORS**



**GOLD CO-SPONSORS**



**MIKE DUNLAP & ASSOCIATES**

**SILVER CO-SPONSORS**

AGVENTURES NW

FIRSTLINE SEEDS, INC.

CENTRAL BEAN CO.

GREENBANK, INC.

CRITES SEED, INC

RAINIER SEEDS, INC.

**BRONZE CO-SPONSOR**

SPECTRUM CROP DVELEPOMENT

### Happy 2018 To Everyone!

We would like to Welcome our New Executive Committee and Board of Director Members and take this opportunity to introduce them to you!

#### 2017-19 Executive Committee

President: *Craig Teel*  
 Vice-President: *Garrett Moon*  
 Secretary/Treasurer: *Kirk Jungers*  
 Ex-Officio Member: *Victor Shaul*  
 Past President: *Paul Carter*



#### WSCIA Board of Directors by County

Columbia/Garfield/Asotin	<i>Bruce Abbey</i>	Walla Walla	<i>Mike Anderson</i>
Douglas	<i>Shirley McLean</i>	Whitman	<i>Micah Butcher</i>
Franklin	<i>Roland Wynhoff</i>	Yakima/Benton	<i>Paul Porter</i>
Grant	<i>Steele Brown</i>	WSU Foundation Seed	<i>Mike Pumphrey</i>
Lincoln/Adams	<i>Eric Ward</i>	OSU Foundation Seed	<i>Hannah Kammeyer</i>
Spokane	<i>Ken Fuchs</i>		

#### WSCIA COMMITTEE MEMBERS WANTED

WSCIA has several committees which are made up of Association members and are an integral part of the operation of the Association. We are looking for interested members to participate in each of the following committees.

Foundation Seed Advisory Committee (5 voting members)

Promotion & Education Committee (5 voting members)

Seed Certification Advisory Committee (5 voting members)

These three committees are active committees and work with the WSCIA Board of Directors to direct and set policy of the Association and help set goals and objectives for the future. If you are interested in participating or have questions please call the WSCIA office at (509) 334-0461 or e-mail me at [jerry@washingtongrow.com](mailto:jerry@washingtongrow.com).

#### REMINDER: NEW ELECTRONIC BULK TRANSFER CERTIFICATE

Bulk transfer certificates are to be used for all wholesale sales of Washington-certified seed, and for retail sales made to out of state growers. **If you are shipping seed that was certified by an agency other than WSCIA, the WSCIA bulk transfer certificate is not to be used.**

WSCIA is moving away from paper copies of bulk transfer certificates, and exclusively to our electronic form system. Using the electronic system for bulk certificates (online at [wscia.co](http://wscia.co)) will increase the accuracy of the information on the certificate, and save you time. Based on the certification lab number, seed variety, grower information, and lot number are automatically input into the form. All that you need to do is enter the number of pounds being shipped, the seed class information, and details for the consignee. Copies of the bulk certificate are emailed to both you and the consignee, and one must be printed and sent with the truck.

Our goal is for all bulk certificates to be issued electronically for shipments made in Fall 2018 and beyond. Log on to [wscia.co](http://wscia.co) to learn about the system, and call the seed certification office if you have any questions.

## MARK YOUR CALENDARS

Winter wheat **Seedling Inspection Applications** are due **ASAP** in order to wave land history for 2018 production. Seedling inspection applications for spring-planted crop are due within 15 days of planting.

**February 1st: Application for review of small grain varieties for Certification due.** If you are bringing a new variety into certification in 2018, an application must be submitted before that variety can be accepted into the WSCIA program. Please contact the office if you have questions.

**April 1st: Early submission deadline for Field Inspection Applications.** The \$25.00 application fee will be waived for applications **completed online (wscia.co)** before April 01, 2018. **Make sure that you include the seed stock verification and a map with your application.**

**June 1st:** Field inspection applications due to the WSCIA office. Applications submitted after **June 01, 2018**, will be charged a **\$50 late fee** per application. Incomplete applications, i.e. applications that arrive by the deadline but are missing required elements such as a map or tag, are also subject to the late fee.

**November 11th & 12th:** WSCIA 2018 Annual Meeting, at the Best Western University Inn, Moscow, Idaho

**All forms are available on our website: [washingtoncrop.com](http://washingtoncrop.com)**

### WAC Revisions

Changes are being proposed to WAC 16-302 (General Rules for Seed Certification) and WAC 16-303-340 (Seed Certification Fees for Buckwheat, Chickpea, Field Pea, Lentil, Millet, Soybean, Sorghum and Small Grains). If approved, these changes would:

- ◇ Reduce the number of years required between production of certified peas and chickpeas.
- ◇ Reduce isolation for pulse crops.
- ◇ Require that field inspection applications are submitted earlier.
- ◇ Clarify that foundation and registered class chickpeas are to have two inspections, with one when leaf type can be distinguished and a second inspection between full bloom and late pod.
- ◇ Require that chickpea seed be treated for ascochyta blight only if ascochyta blight is found at field inspection.
- ◇ Explain the WSCIA audit process and assessment of final certification fees.

A public hearing will be held as part of the revision process.

Please contact WSCIA if you would like more information.

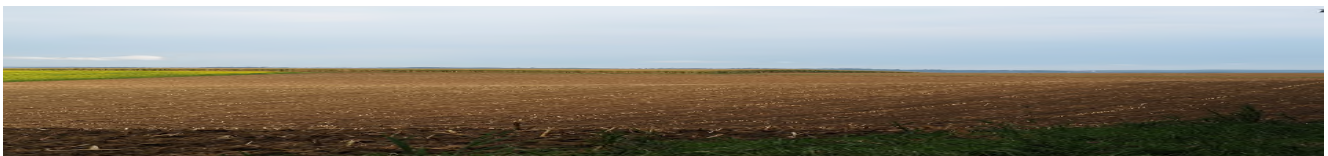


## Certification Corner

By Lauren Port

While it is just barely 2018, the summer season will be upon us before we know it. As you prepare your fields and the accompanying paperwork for submission to WSCIA, we have some recommendations to share with you:

- Send seedling inspection applications to WSCIA within 10 days of planting. Seedling inspections are to be conducted at the 3-4 leaf stage, and if the application is not received in a timely manner we may not be able to schedule inspection.
- Submit your field inspection application online ([wscia.co](http://wscia.co)) before April 1 in order to have the \$25 application fee waived.
- Before going online to submit an application, make sure that you have electronic files for field maps and seed stock documents.
- Provide email addresses on all field inspection applications. Inspection reports will be emailed by the inspection program to the email address provided on the application.
- Familiarize yourself with the electronic system for issuing bulk seed certificates this spring when shipping volumes are lower than the fall. We are phasing out paper bulk certificates, and would like to be 100% electronic by Fall 2018.



## Greetings from the Seed House

By Darryl Krause

I hope everyone had a Merry Christmas and Happy New Year. I would like to thank the companies and people in the agriculture industry that support and purchase foundation seed.

It's getting to be that time of year when we start treating seed for spring planting.

- For small grains we will be using our standard Syngenta Cruisemaxx .66 Blend.
- For chickpeas we will be using Albaugh's LSV Intego Fungicide Insecticide Blend.
- For peas and lentils we will be using Maxim/Apron/Moly & Cruiser Blend.

If you need to make changes to any seed treatment application, please contact Foundation Seed Service as early as possible. Contact info: Darryl Krause or Darlene Hilkin (509) 335-4365 .

Changes in treatment application rates may result in price changes.

Darryl E. Krause

Operations Supervisor

## SPRING VARIETIES AVAILABLE FROM REGIONAL BREEDING PROGRAMS

This is only a small highlight from the portfolios of each of the represented breeding programs. For more information about certified seed available for spring planting, contact your local seed dealer. Performance information for these varieties may be available from the WSU Extension Cereal Variety Testing Program, and in WSCIA's Certified Seed Buying Guide.

### **Limagrain Cereal Seeds**

**LCS Iron** is a hard red spring wheat tailored for farmers looking for an irrigated or high rainfall option with very good tolerance to current races of stripe rust. Over the past 3 seasons, LCS Iron has been the highest yielding HRSW in 3 different WSU precipitation zones. The adaptation of LCS Iron is extremely broad, extending from Washington and Oregon down into southern Idaho, and even into Montana.

**LCS Luna** is a hard red spring wheat bred for farmers in lower precipitation zones. For the past two seasons, LCS Luna has shown top-end yield potential in PNW trial sites with less than 16 inches of rainfall annually. The disease resistance package for LCS Luna is led by good tolerance to both Head Scab and current races of Stripe Rust. The milling and baking quality for LCS Luna are both very desirable.

### **Syngenta**

**SY Saltese** is a soft white spring wheat from a Louise x Alpowa cross. SY Saltese is a consistent performer across rain zones and has good straw strength for irrigation. It is substantially earlier and shorter than Louise with a similar HTAP resistance to stripe rust.

**SY Coho** is a high rainfall or irrigated DNS variety. With excellent tolerance to stripe rust and a high protein content, SY Coho is a great fit for high yielding production systems. SY Coho has medium to late maturity and medium plant height with good end use quality.

### **Washington State University**

**Survivor Barley** – WSU's Beyond® Tolerant feed barley. Foundation Seed was planted last May 5<sup>th</sup>, East of St. John, WA. This was the first commercial Seed production for Survivor. The fields averaged 5,300 pounds and stood up well. Foundation Seed available from WSCIA and Registered Seed from WhitGro. *These lines are not intended to be sprayed with IMI herbicides; rather they were developed to withstand residual herbicides in the soil. Beyond® is a registered trademark of BASF Agrochemical Products.*

**Alum** – WSU's High rainfall spring DNS with Aluminum Tolerance. Very good adult Stripe Rust Resistance, Hessian Fly Resistant, Medium Height, Most Desirable Quality Rating. Very Good to Excellent Yield Potential.

### **WestBred**

**WB9350** is a Hard Red Spring variety with high yield potential. WB9350 has a short plant height with excellent standability and a very good overall disease package. WB9350 is an excellent option for irrigated acres, and is a replacement for Solano.

**WB9668** is a broadly adapted Hard Red Spring variety with high yield potential and outstanding protein that provides excellent resistance to Hessian Fly and Yellow (Stripe) Rust. In addition to an outstanding disease package, WB9668 offers excellent standability. Certified seed is available.

**Washington State Crop  
Improvement Association  
Since 1953**

Helping Bring the Best in Quality:

**WSCIA Business Office**

Jeny Robinson—Manager  
Karen Olstad—Program Manager  
Lauren Port—Certification & Field Supervisor  
Cheri Jo Kramer—Office Assistant

**WSCIA FSS Seed House**

Darryl Krause—Program Operations Manager  
Darlene Hilkin—Office Manager  
Gary Becker—Seed & Warehouse Technician

[www.washingtoncrop.com](http://www.washingtoncrop.com)

Washington State Crop Improvement Association, Inc., is a non-profit organization working with Washington State University, Washington State Department of Agriculture and Washington seed growers and conditioners to develop, produce and distribute certified seed in order to improve crop yields in the state of Washington. WSCIA was incorporated in 1953. It is governed by a Board of Directors and an Executive Committee. Directors are elected by their county crop improvement associations.

The Association has an active membership of over 400 members. Anyone (person or organization) interested in quality seed in general is encouraged to become a member of the Association. Membership in the Association provides the member information relative to the seed industry such as new developments, technical information, and sources and availability of seed, etcetera.

Washington State Crop Improvement Association, Inc. is funded by fees for services rendered and Foundation Seed sales.

NON-PROFIT  
ORGANIZATION  
U.S. POSTAGE  
PAID  
PULLMAN, WA

Washington State Crop Improvement Assn.  
2575 NE Hopkins Court  
Pullman, WA 99163  
(509) 334-0461

